

**SAMSON CREE NATION – MATRIX SOLUTIONS INC.
PARTNERSHIP**

ABORIGINAL CONSTRUCTION MONITORING

WEEKLY REPORT

SPREAD 1

JANUARY 15TH TO JANUARY 21ST

1. PURPOSE OF THIS REPORT

The report is a weekly summary of the daily reports submitted by the Aboriginal Monitors that are working on spread one. The social and cultural findings have been tabulated with locations and mitigation measures below. A summary of the construction activities has been summarized for the week of January 15th to January 21st, 2018.

Social and Cultural Features

Field Observation	# of occurrences	Description and Mitigation Measures	Mitigation Status	Further Action Required (Yes/No)
Traditional Use Area (hunting, fishing, gathering, trapping)	Several	143km+900 - 140km+300, 138km+600- 136km+600, 125km+550-118km+100, 102km+300, 102km+100, 103km+300, 100km+250, 133km+300- 134km+600, 100km+200- 102km+600, 102km+200, 122km+400- 129km+400, 98km+350- 97km+500, 113km+100, 114km+400, 111km+700-109km+500, 102km+300		
Rock Formations (rocks of significance, tipi rings, etc.)	N/A			
Artifacts	N/A			
Bones	N/A			
Potential Gravesites	N/A			

Environmental Features

Field Observation	# of occurrences	Description and Mitigation Measures	Mitigation Status	Further Action Required (Yes/No)
Medicinal or Cultural Plants	N/A			
Aquatic Life	N/A			

Animal Observations or Burrows	98km+300	Three deer on ROW		No
Bird Nests	N/A			
Trees (Red Willow)	N/A			
Wetlands	97km+500,109km+500	Creek through ROW, wetlands present		No
Watercourse Crossing	97km+500	Bridge removal on creek		No

Additional Observations and Summary of Activities or Concerns

Attended daily safety meetings and discussed daily scopes each morning with the Contractor Liaison, Mel Abraham and/or the Senior Construction Monitor, Virgil Deschamps. Additionally, the crew attended scheduled midweek meeting with Eric Foster from Matrix Solutions.

Weekly activities included spot-checking km 97,98,100,102,103,109-111,113,114,118-129,133,134,136-138,140-143, and shoofly 63, 82,

On January 15, the monitors headed to km 143+900 where NDT testing was taking place. Tie-in work was noted at km 140+100; additionally, excavators were digging bell holes at km 140+300 and 140+400. At km 136+600, side booms were loading boring pipe onto transport truck. Backfilling was noted at km 122+400, excavators were working the dirt piles at km 121+800/900, and another excavator was crossing the road to begin digging in the bell hole. The hydrovac was at km 121+000, and at km 119+200, tie-in work was monitored. Excavators were backfilling at km 118+100.

On January 16, the monitors set out to km 102+300 where welding tie-in was observed, as booms were holding pipe in the ditch for the welders. Tie-in work occurred at 102km+100, backfilling was taking place at km 102+075, and at km 103+300 booms were holding pipe for tie-in. At km 100+250, the excavator was moving dirt and a truck was loading a flat bed. Backfilling and dozer work was noted at km 97+500 and the hydrovac was present at km 121+000.

On January 17, work was shut down due to rain.

The following day, the monitors checked out dirt piles on the ROW at km 134+600 to km 133+300 (SF82), nothing of significance was found. The ROW was very slippery and muddy. Dozers and excavators were moving dirt at km 102+300 (SF63); and at km 100+250 (SF 61), the dirt pile is flattened out and dispersed along the ROW. Excavator crossing was observed at km 100+300 and the dozer was clearing dirt at km100+300.

On January 19, the excavator was monitored at location km 102+200, it was putting dirt around pipe using its sift bucket. Tie-in was going on in the above area and booms were holding pipe in the ditch for welders. Dozers were moving dirt for backfill. In general the area was very busy, O.J trucks were driving on and off of the ROW.

The following day, the monitors headed to km 124+200 where hydrovacs were at the hotline crossing. Tie-in welding was noted at km 125+550, where booms were hooked to welding shack. Also, the monitors searched dirt piles on the ROW from km 125+550 to km 126+850, nothing of cultural significance was found. Booms were seen carrying bent pipe at km 126+950, and pipe was in the ground and mainline was backfilled at location km 129+200. At km 129+400, the excavator was at work.

On January 21, excavators and dozers were prepping and the grader was grading the mainline at km 98+350. Three deer was observed crossing the ROW at km 98+100. Bridge removal was taking place at km 97+500, excavators and dozers were removing dirt and clean up was on going. Tie-in welding was observed at km 113+100, booms

were holding pipe in the ditch for welders. Sandblasters were on the ROW at km 111+700. At km 109+500, excavator and dozer backfilling was taking place at the ravine (water crossing). Also, excavator and dozer was moving dirt at km 102+300.

The location of these features was documented and photos were collected (see below). No additional cultural or environmental features were observed within the scanned area.

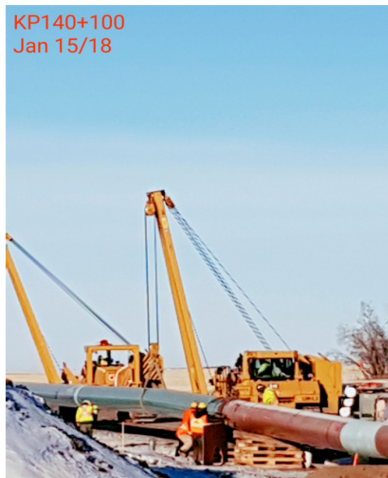
Photos of Sites Visited & Topics Discussed This Week



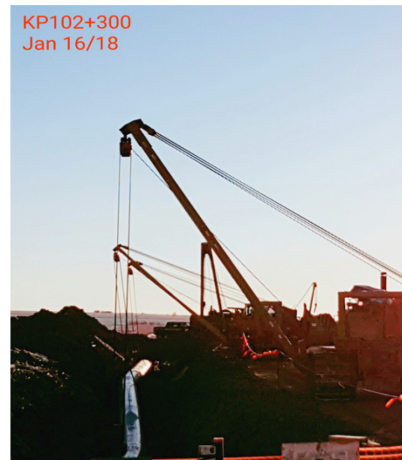
1. Excavator working on dirt piles- Km 121+800 – Jan 15, 2018



2. Excavator – Km 121+900 – Jan 15, 2018



3. Tie-in– Km 140+100 – Jan 15, 2018



4. Welding tie-in – km 102+300 – Jan 16, 2018



5. Dozer crossing – Km 100+300 – Jan 18, 2018



6. Excavator – km 100+250 – Jan 18, 2018



7. Excavator with sift bucket – Km 102+200 – Jan 19, 2018



8. Excavator - Km 102+200 – Jan 19, 2018



9. Backfilled mainline - Km 129+200 – Jan 20, 2018



10. Tie-in – Km 125+500 – Jan 20, 2018



11. Deer crossing ROW – Km 98+100 – Jan 21, 2018



12. Excavators and dozers – Km 102+300 – Jan 21, 2018

KP97+500
Jan 21/18



3. Bridge removal – Km 97+500 – Jan 21, 2018

KP109+500
Jan 21/18



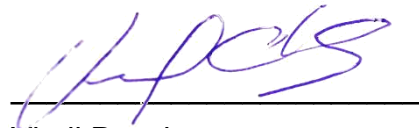
14. Backfill at ravine – 109km+500 – Jan 21, 2018

KP113+000
Jan 21/18



15. Tie-in welding – km113+000 – Jan21, 2018

APPROVALS

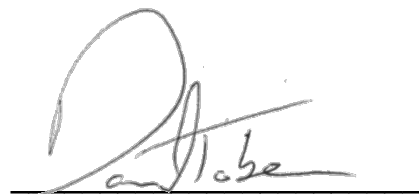


Virgil Deschamps

Senior Construction Monitor

January 24, 2018

Date



Daniel Tober

Senior Environmental Scientist

January 24, 2018

Date